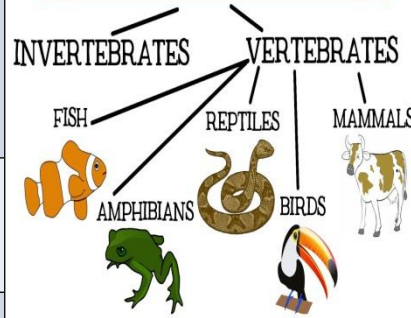


Yr 1- I'm in Year 1, get me out of here! Knowledge Mat

Subject Specific Vocabulary

Senses	A faculty by which the body perceives an external stimulus; one of the faculties of sight, smell, hearing, taste, and touch.
Wild	Living or growing in the natural environment; not domesticated or cultivated.
Characteristics	A feature or quality belonging typically to a person, place, or thing and serving to identify them.
Mammals	A warm-blooded vertebrate animal of a class that secrete milk for their young.
Carnivore	An animal that feeds on other animals.
Herbivore	An animal that feeds on plants.
Explore	Travel through (an unfamiliar area) in order to learn about it.

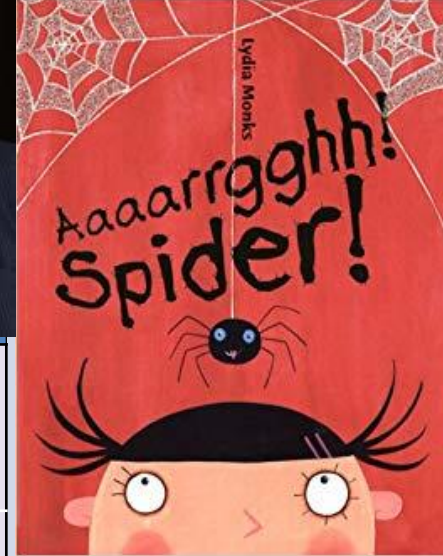
ANIMAL CLASSIFICATION



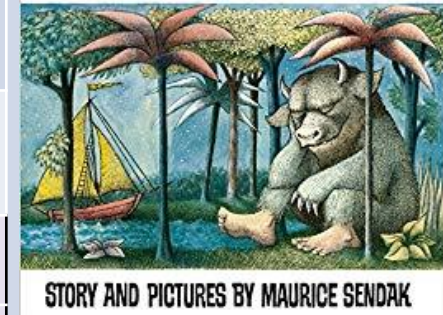
Sticky Knowledge about I'm in Year 1, Get me out of here!

- To know the main parts of the human body
- To know which part of the human body is associated with each sense.
- To know common animal groups (fish, amphibians, birds, reptiles and mammals) and their characteristics.
- To know and classify animals by what they eat (carnivore, herbivore and omnivore)
- To know how to sort by living and non living things.
- To know the common structural characteristics of animals.
- To know that questions can be answered in different ways.

Exciting Books



WHERE THE WILD THINGS ARE



STORY AND PICTURES BY MAURICE SENDAK

Important Places